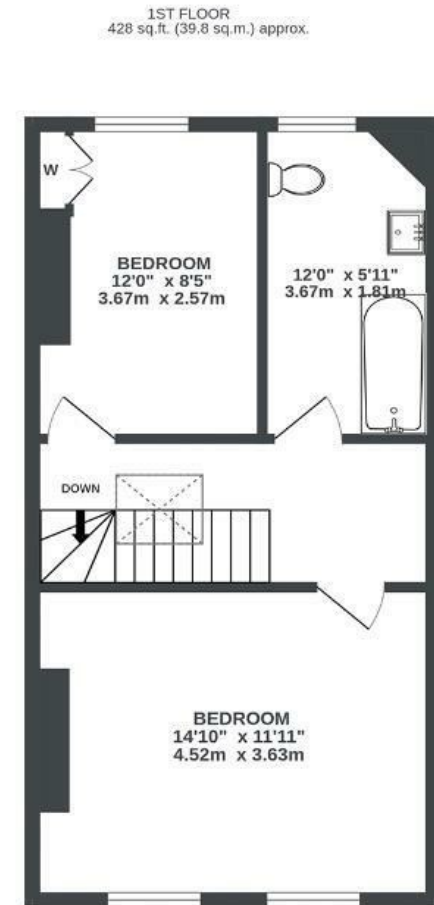
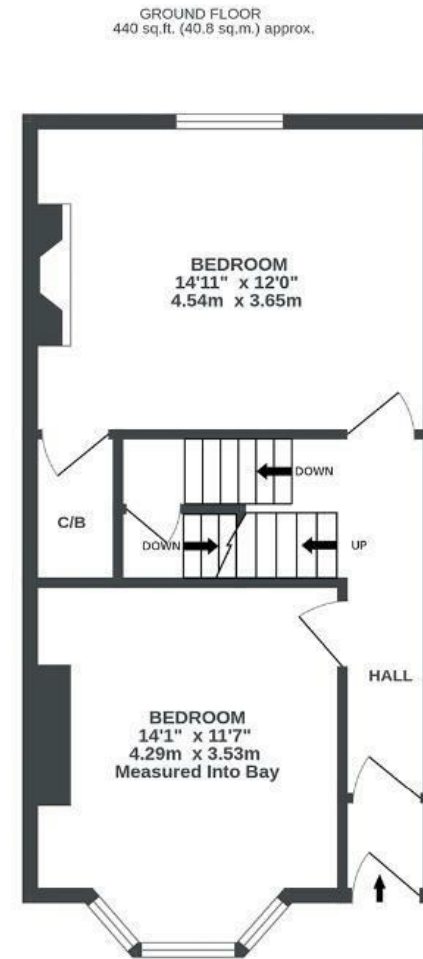


# Banner Road

## MONTPELIER

APPROXIMATE FLOOR AREA  
124 SQM / 1334 SQFT



Illustrations are for reference purposes only, measurements are approximate, not to scale.

Boardwalk

# Banner Road

, BRISTOL

£

£550,000



BS6 5LZ

zzz

4 Bedrooms



2 Bathrooms

*"We've been here for over 10 years, and the open-plan living space has been the perfect setting for entertaining and socialising with friends, and now as the cosy hub of our family home. It's been amazing living right in the vibrant heart of the city with everything on our doorstep, yet still being tucked away on a small peaceful road. The neighbourhood is full of brilliant spots for brunch, drinks, live music and everything in between. All complemented by a lovely local community."*

